

WELCOME HOME DEADBOLT - GD9471

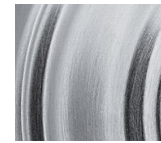
Box Pack Specifications



BRASS



SATIN NICKEL



SATIN CHROME



MATTE BLACK



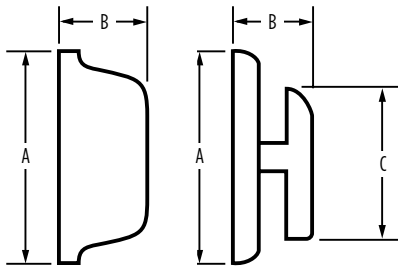
GD9471	3 Brass	15 Satin Nickel	26D Satin Chrome	514 Matte Black
SmartKey Single Cylinder 20 Min	<input type="checkbox"/>	<input type="checkbox"/>	<input type="checkbox"/>	<input type="checkbox"/>
WS Single Cylinder 20 Min	<input type="checkbox"/>	<input type="checkbox"/>	<input type="checkbox"/>	<input type="checkbox"/>

SPECIFICATIONS



20 min.

Door Prep	Cross Bore 2-1/8" Edge Bore 1" Latch Face 1" x 2-1/4"
Backset	Adjustable to 2-3/8" or 2-3/4"
Door Thickness	1-3/8" - 1-3/4" doors standard. 2-1/4" doors optional
Cylinder	SmartKey or WS 5-pin
Faceplates	1" x 2 1/4" Includes square corner, radius corner and drive-in
Strikes	1-1/8" x 2-3/4" Includes square corner and radius corner
Bolt	1" throw. Steel.
Door Handing	Reversible for right or left-handed doors
ANSI/BHMA	A156.5 Grade 2
ADA	Interior turn piece meets 4.13.9 ADA requirements
UL	Fire rating available, see specific product for availability
ASTM	All Weiser product meets ASTM E 331 water penetration testing



Dimensions	A	B	C
GD9471	2 9/16"	1 1/16"	1 3/4"

WARRANTY:

Weiser™ products provide a "Lifetime Mechanical Warranty" that covers all defects in material and workmanship. For more information, please visit ca.weiserlock.com/en/warranty/.